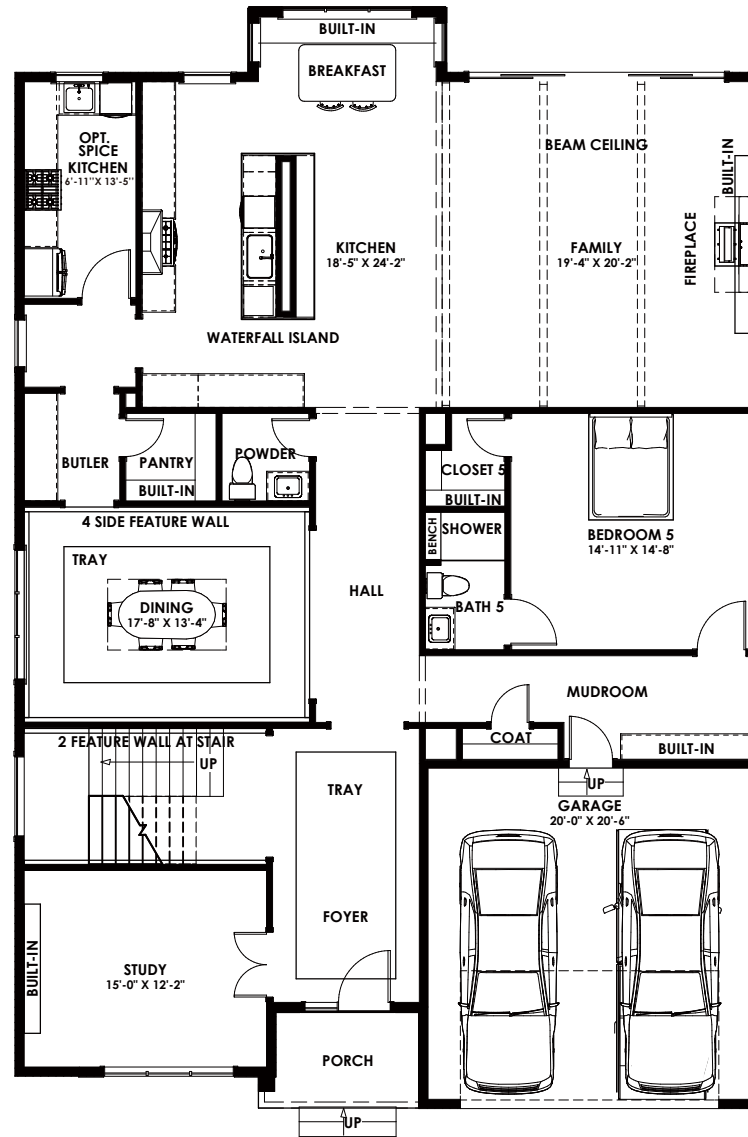




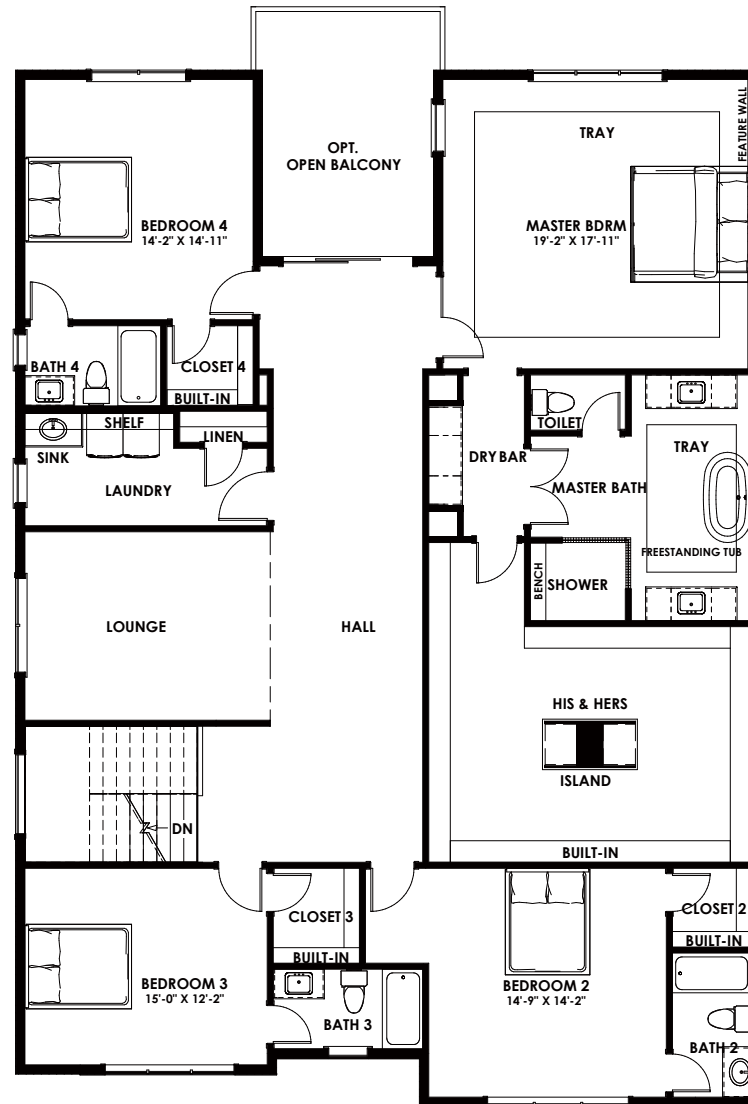
2239 MERIDIAN ST, FALLS CHURCH, VA 22046

Main level



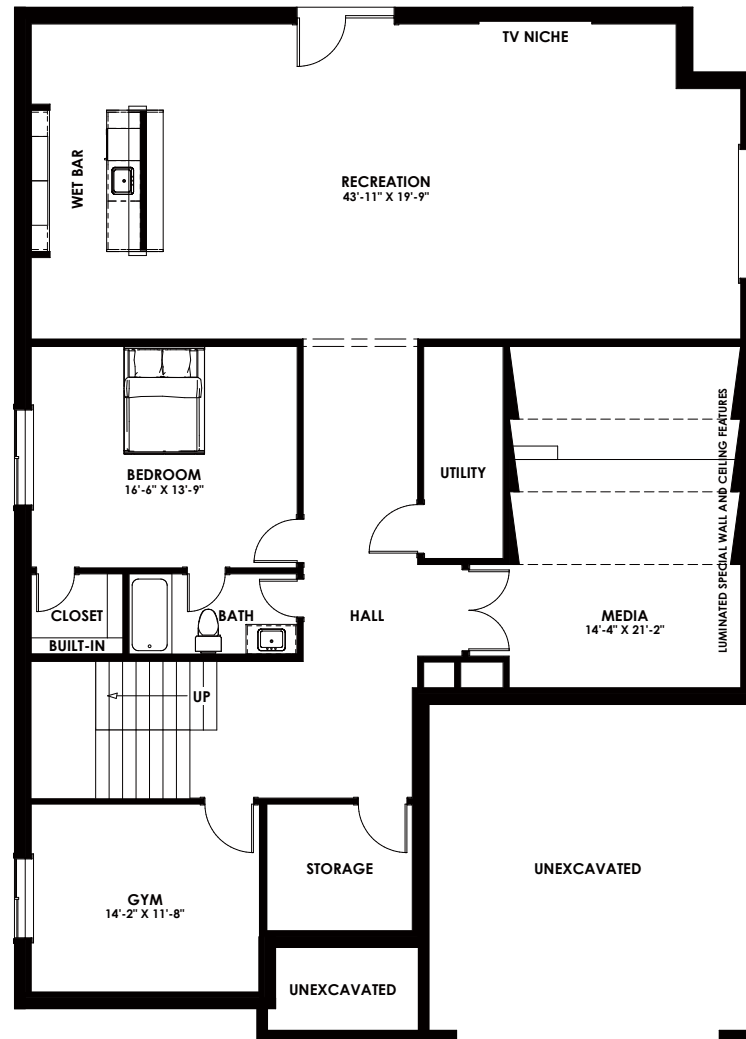
LIVING SPACE
2,471 SQ FT

Upper level



LIVING SPACE
2,761 SQ FT

Lower Level



LIVING SPACE
2,341 SQ FT

*Basement layout is for illustrative purposes only, the actual layout will be optimized based on the approved grading plan.

The floor plan is shown in the Avona @2239 Meridian style. All dimensions are approximate. Plans and specifications are subject to modifications and improvements without notice. Components including but not limited to windows, doors, and room sizes may vary depending on the options and elevations selected. Optional items are available at additional costs. Renderings are artist's representations for illustrative purpose only. The information, plans, specifications, and designs contained in these rawings cannot be used or reproduced in whole or part without the prior written consent of Anchor Homes LLC. All rights reserved.

(703) 997-1618
DreamHome@anchor-homes.com
www.MyAnchorHomes.com