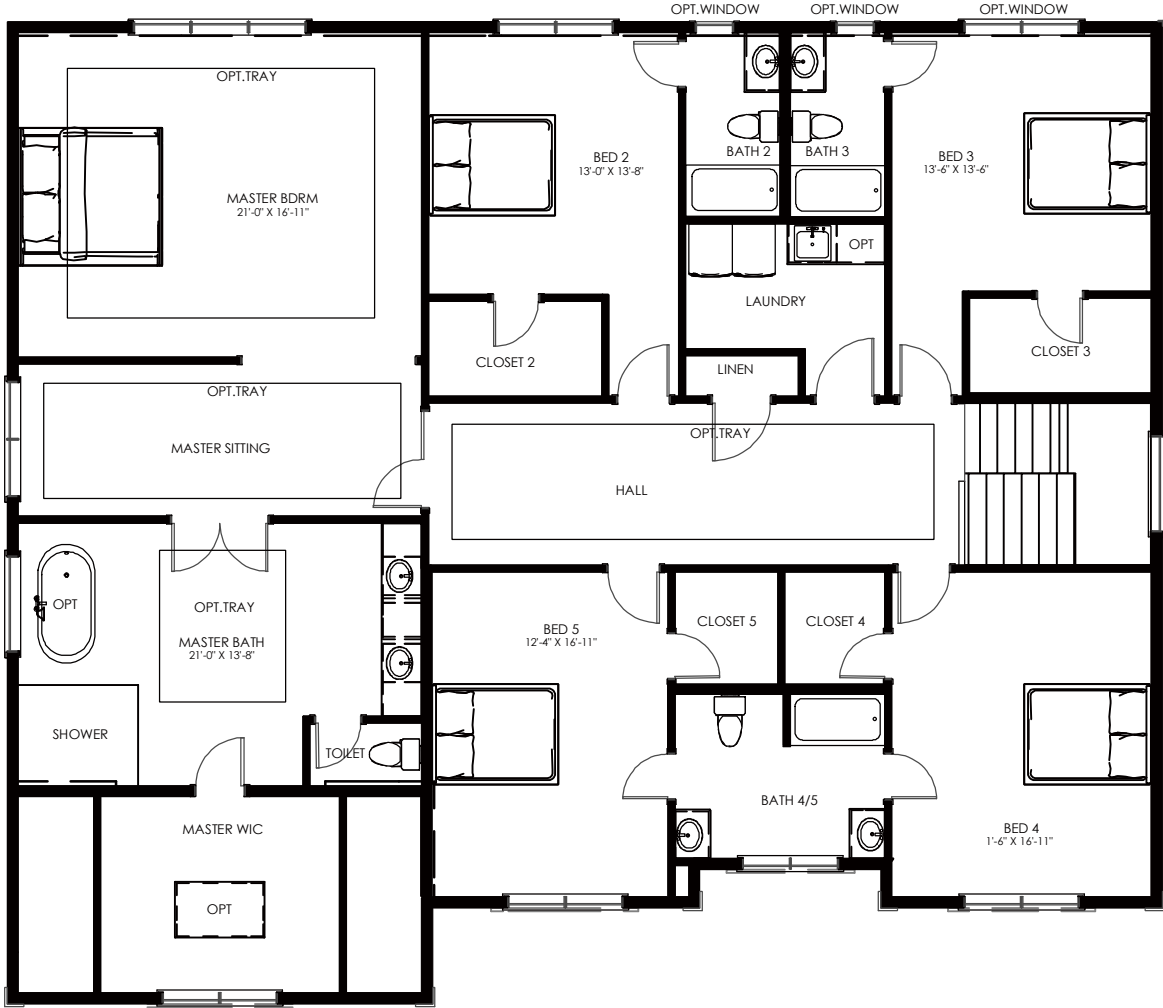


THE BRISTOL MAIN LEVEL



LIVING AREA
2,596SQ FT

THE BRISTOL UPPER LEVEL



LIVING AREA
2,757SQ FT

THE BRISTOL LOWER LEVEL



OPTIONAL FINISHED BASEMENT
LIVING AREA
2,412SQ FT



The floor plan is shown in the BRISTOL style. All dimensions are approximate. Plans and specifications are subject to modifications and improvements without notice. Components including but not limited to windows, doors, and room sizes may vary depending on the options and elevations selected. Optional items are available at additional costs. Renderings are artist's representations for illustrative purpose only. The information, plans, specifications, and designs contained in these drawings cannot be used or reproduced in whole or part without the prior written consent of Anchor Homes LLC. All rights reserved.

(703) 997-1618
info@anchor-homes.com
www.MyAnchorHomes.com