

THE  
WILLOWS

A | H

**THE WILLOWS**  
ELEVATION A



**THE WILLOWS**  
ELEVATION B





**THE WILLOWS**  
ELEVATION C



**THE WILLOWS**  
ELEVATION E





**THE WILLOWS**  
ELEVATION D





**THE WILLOWS**  
ELEVATION F





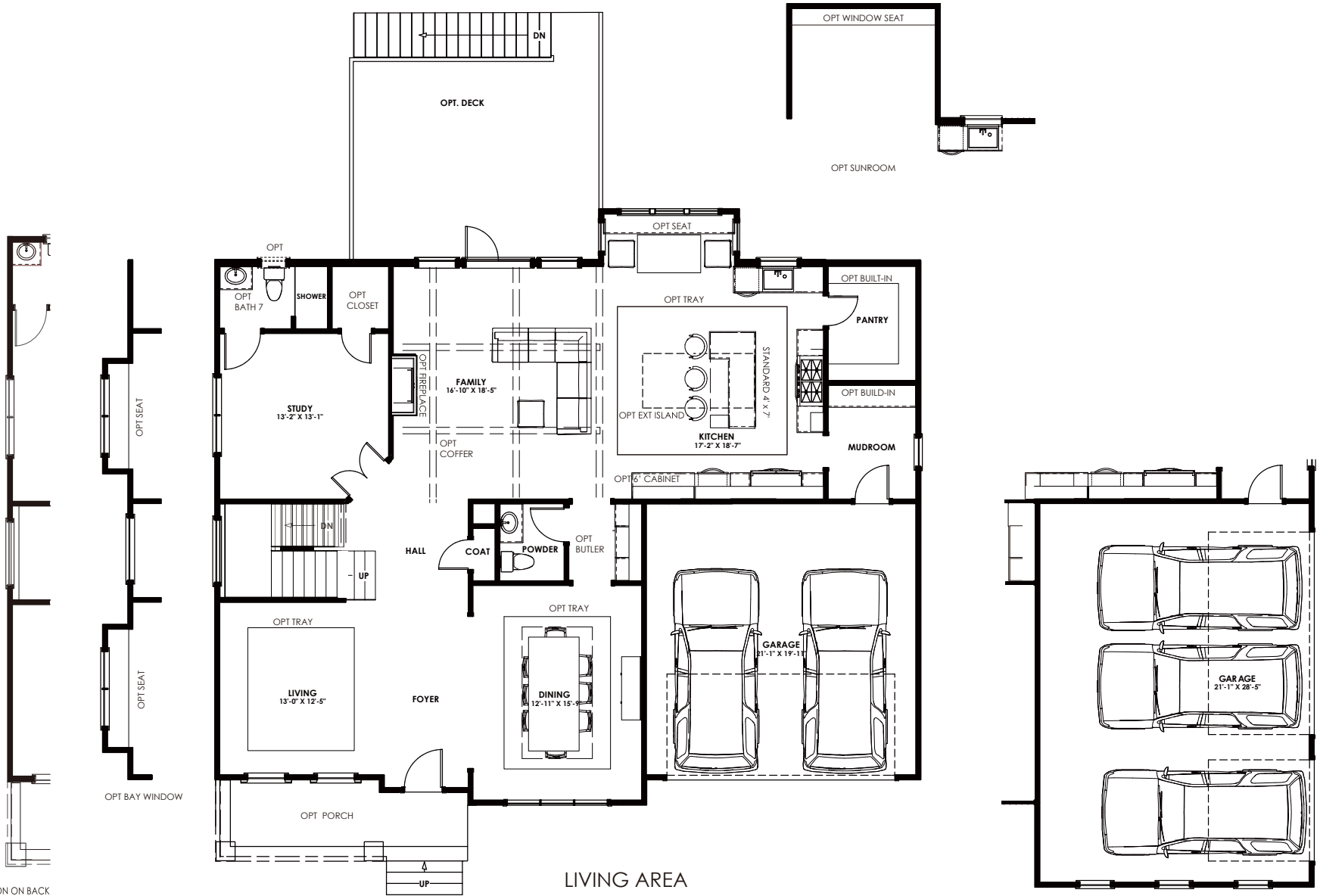
# THE WILLOWS

Additional Color Theme



# THE WILLOWS

## MAIN LEVEL



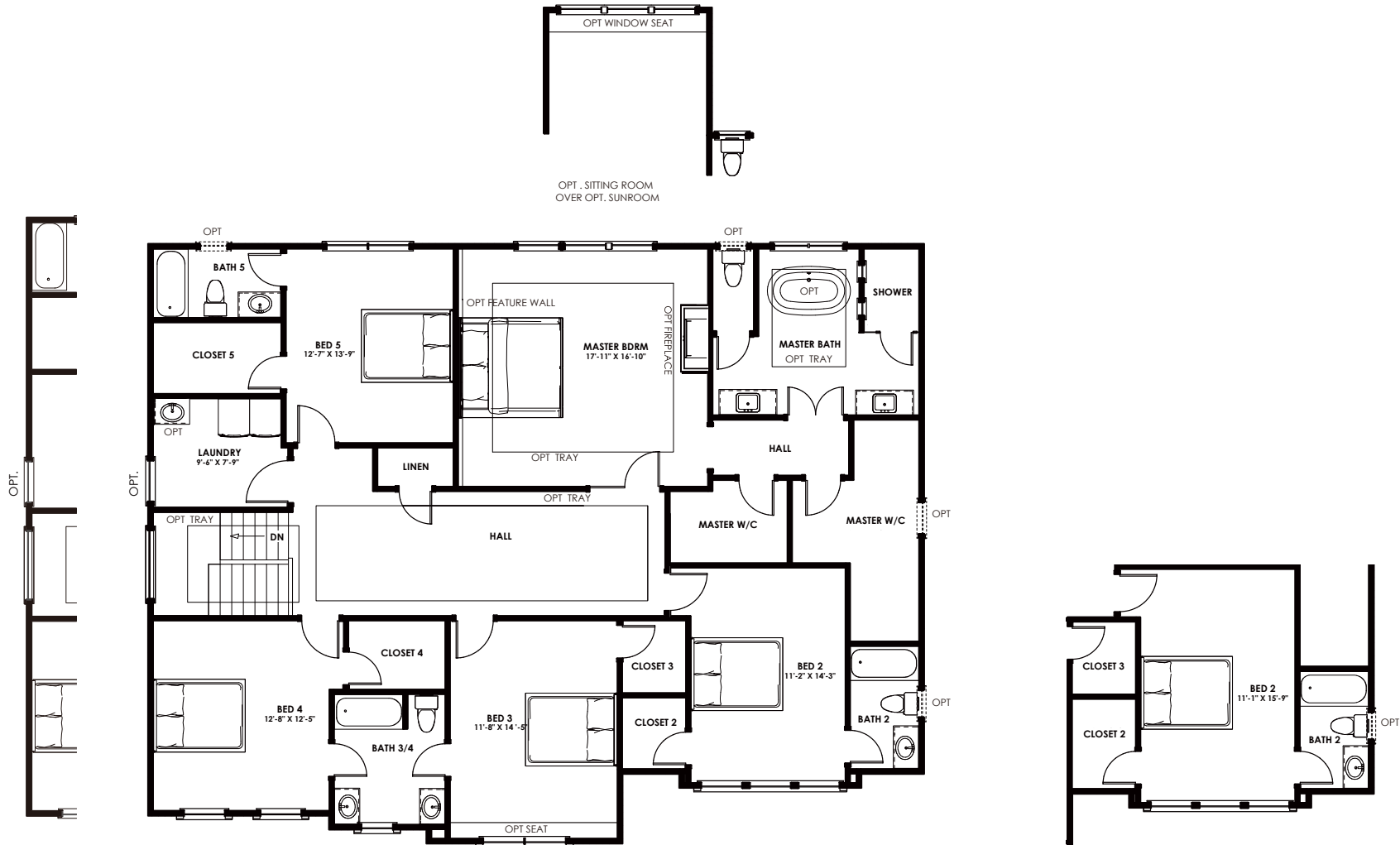
2' EXTENSION ON BACK

LIVING AREA  
1,856 SQ FT

OPT . 3 CAR GARAGE

# THE WILLOWS

## UPPER LEVEL



2' EXTENSION ON BACK

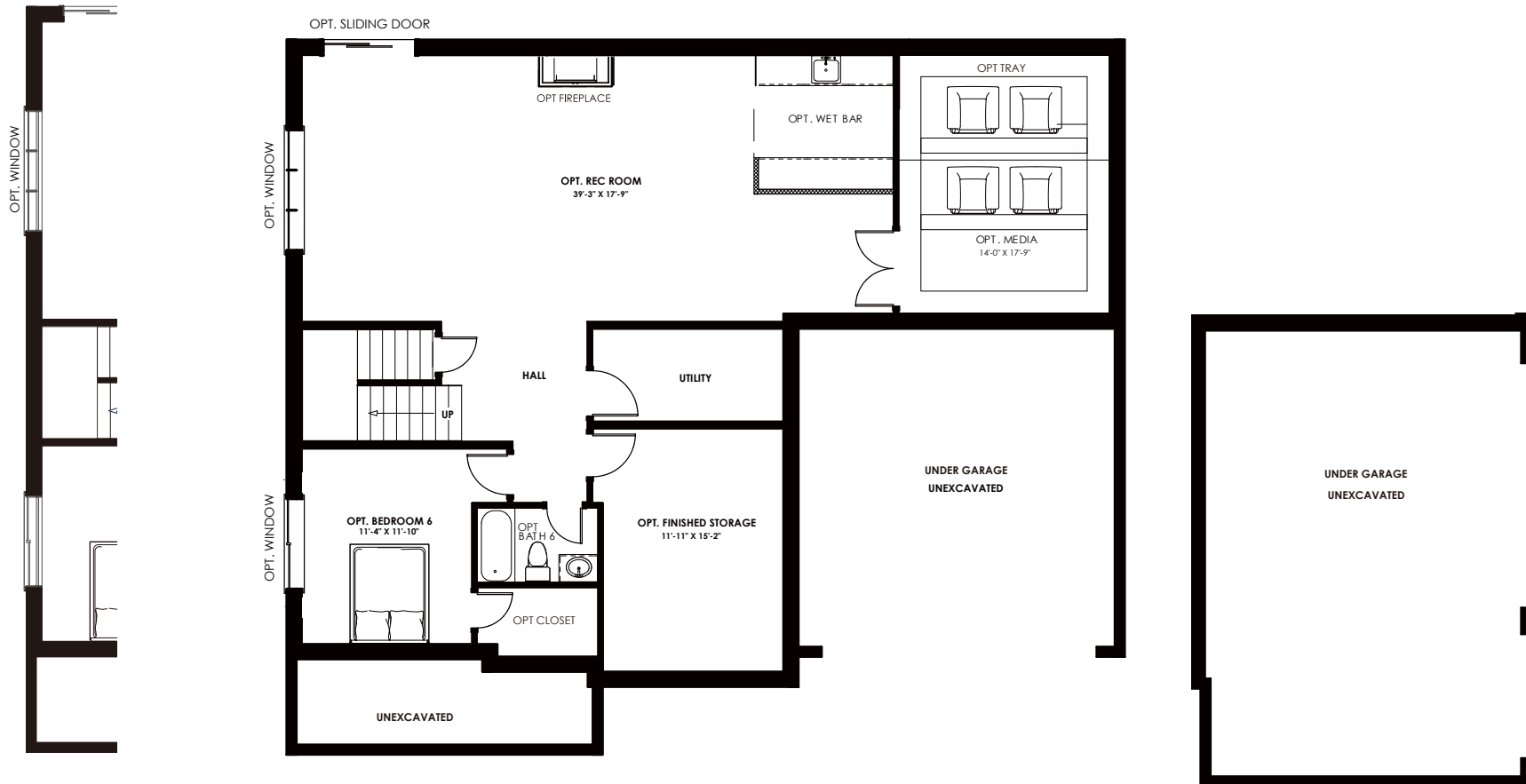
OPT. 1'4" FRONT EXTENSION  
AT BED 2 OVER 3 CAR GARAGE

LIVING AREA  
2,206 SQ FT



# THE WILLOWS

## LOWER LEVEL



2' EXTENSION ON BACK

OPTIONAL FINISHED BASEMENT  
LIVING AREA  
1,646 SQ FT

OPT 3 CAR GARAGE



(703) 997-1618

[info@anchor-homes.com](mailto:info@anchor-homes.com)

[www.myanchorhomes.com](http://www.myanchorhomes.com)

The floor plan is shown in the Willows style. All dimensions are approximate. Plans and specifications are subject to modifications and improvements without notice. Components including but not limited to windows, doors, and room sizes may vary depending on the options and elevations selected. Optional items are available at additional costs. Renderings are artist's representations for illustrative purpose only. The information, plans, specifications, and designs contained in these drawings cannot be used or reproduced in whole or part without the prior written consent of Anchor Homes LLC. All rights reserved.